

SPECIAL CONSIDERATIONS
RECLAMATION DISTRICT NO. 2038

BACON ISLAND GROUND ACCESS
GROUND ACCESS TO BACON ISLAND IS PROVIDED BY TRAPPER ROAD, WHICH RUNS THROUGH THE EAST END OF BACON ISLAND. ACCESS TO BACON ISLAND FROM THE WEST IS PROVIDED BY TRAPPER ROAD, WHICH RUNS THROUGH THE WEST END OF BACON ISLAND. ACCESS TO BACON ISLAND FROM THE SOUTH IS PROVIDED BY TRAPPER ROAD, WHICH RUNS THROUGH THE SOUTH END OF BACON ISLAND. ACCESS TO BACON ISLAND FROM THE NORTH IS PROVIDED BY TRAPPER ROAD, WHICH RUNS THROUGH THE NORTH END OF BACON ISLAND.

FLOOD CONTINGENCY OPTIONS
RECLAMATION DISTRICT NO. 2038

GENERAL FLOOD FIGHT STRATEGY WILL BE TO DISPECT AND MAINTAIN REMAINING DISTRICT LEVIES.
ACTIONS TO CONSIDER:
• MAINTAIN THE REMAINING DISTRICT LEVIES AND CONSIDERATION OPTIONS.
• REPAIR BREAK BY MEANS OF PLACING ROCKS ON EACH SIDE OF THE BEACON TO PREVENT FURTHER EROSION. ALONG THE BEACON, AND PLACE IN ROCKS WITHIN THE BEACON TO PREVENT FURTHER EROSION. ALONG THE BEACON, AND PLACE IN ROCKS WITHIN THE BEACON TO PREVENT FURTHER EROSION. ALONG THE BEACON, AND PLACE IN ROCKS WITHIN THE BEACON TO PREVENT FURTHER EROSION.

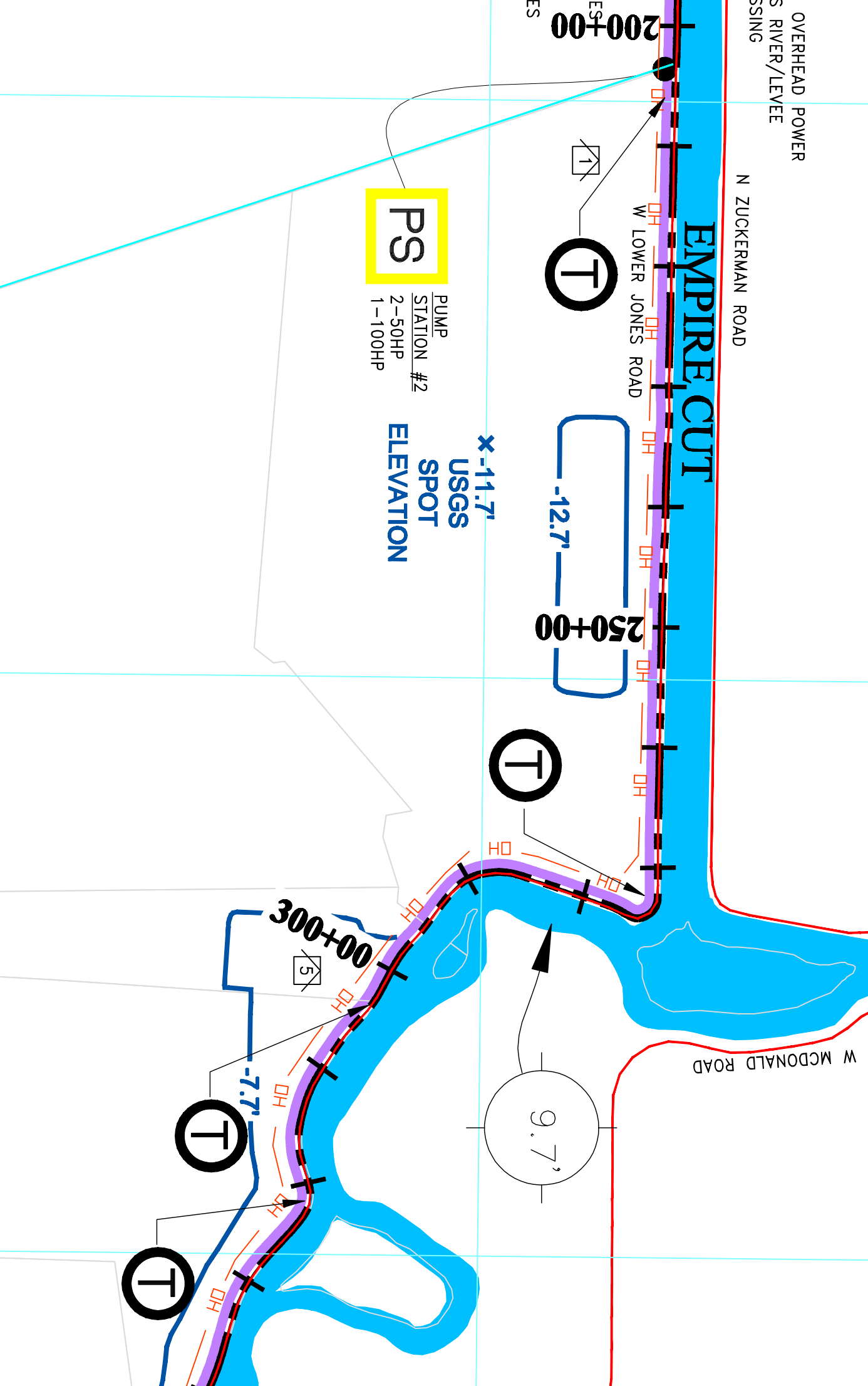
LEGEND

100-YEAR FLOOD ELEVATION PER FEMA FLOOD INSURANCE COMMUNITY FLOODING	DRY LAND
100-YEAR FLOOD ELEVATION PER FEMA FLOOD INSURANCE COMMUNITY FLOODING	LEVEE/EMBANKMENT
100-YEAR FLOOD ELEVATION PER FEMA FLOOD INSURANCE COMMUNITY FLOODING	LEVEE/EMBANKMENT (GENERAL SECTION)
100-YEAR FLOOD ELEVATION PER FEMA FLOOD INSURANCE COMMUNITY FLOODING	LEVEE/EMBANKMENT (GENERAL SECTION)
100-YEAR FLOOD ELEVATION PER FEMA FLOOD INSURANCE COMMUNITY FLOODING	LEVEE/EMBANKMENT (GENERAL SECTION)
100-YEAR FLOOD ELEVATION PER FEMA FLOOD INSURANCE COMMUNITY FLOODING	LEVEE/EMBANKMENT (GENERAL SECTION)

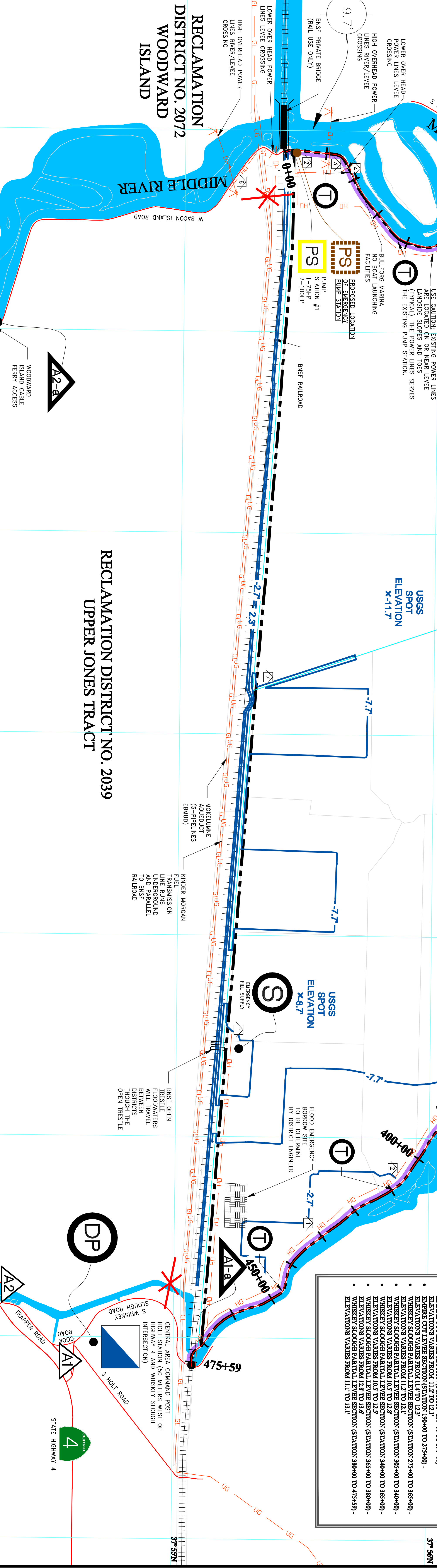
RECLAMATION DISTRICT NO. 2028
BACON ISLAND



RECLAMATION DISTRICT NO. 2030
MCDONALD ISLAND



RECLAMATION DISTRICT NO. 2038
LOWER JONES TRACT (1919)



STRUCTURE USE TABLE
RECLAMATION DISTRICT NO. 2038

1	RESIDENTIAL
2	INDUSTRIAL
3	AGRICULTURAL
4	RECREATION
5	COMMERCIAL
6	UTILITY
7	TRANSPORTATION
8	OTHER

PATROL PLAN
RECLAMATION DISTRICT NO. 2038
LEVEE PATROLS WILL BE CONDUCTED BY THE ROAD RESIDENT PATROLMEN WHO WILL REPORT TO THE DISTRICT ENGINEER. PATROLS WILL BE CONDUCTED AT LEAST ONCE PER WEEK. PATROLS WILL BE CONDUCTED AT LEAST ONCE PER WEEK. PATROLS WILL BE CONDUCTED AT LEAST ONCE PER WEEK.

EVACUATION PLAN
RECLAMATION DISTRICT NO. 2038
EVACUATIONS WILL BE CONDUCTED BY THE DISTRICT ENGINEER. EVACUATIONS WILL BE CONDUCTED BY THE DISTRICT ENGINEER. EVACUATIONS WILL BE CONDUCTED BY THE DISTRICT ENGINEER.

FLOOD WATER DRAINAGE PLAN
RECLAMATION DISTRICT NO. 2038
FLOOD WATER DRAINAGE PLAN FOR RECLAMATION DISTRICT NO. 2038. FLOOD WATER DRAINAGE PLAN FOR RECLAMATION DISTRICT NO. 2038.

LEVY CROWN ELEVATION INFORMATION
RECLAMATION DISTRICT NO. 2038
LEVY CROWN ELEVATION INFORMATION FOR RECLAMATION DISTRICT NO. 2038. LEVY CROWN ELEVATION INFORMATION FOR RECLAMATION DISTRICT NO. 2038.

TACTICAL PLANS - (PRELIMINARY ENGINEERING DESIGNS)
RECLAMATION DISTRICT NO. 2038
TACTICAL PLANS - (PRELIMINARY ENGINEERING DESIGNS) FOR RECLAMATION DISTRICT NO. 2038. TACTICAL PLANS - (PRELIMINARY ENGINEERING DESIGNS) FOR RECLAMATION DISTRICT NO. 2038.

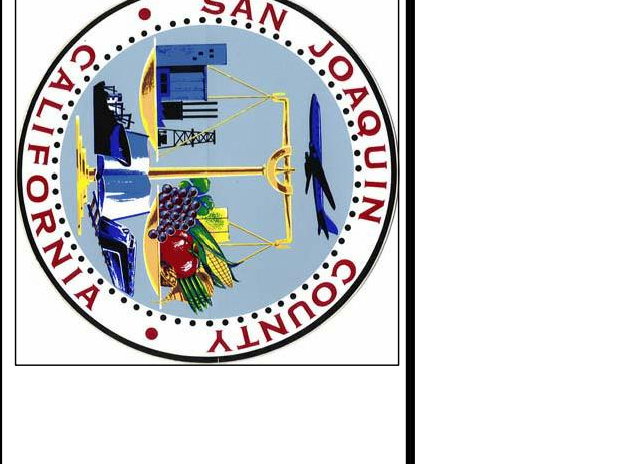
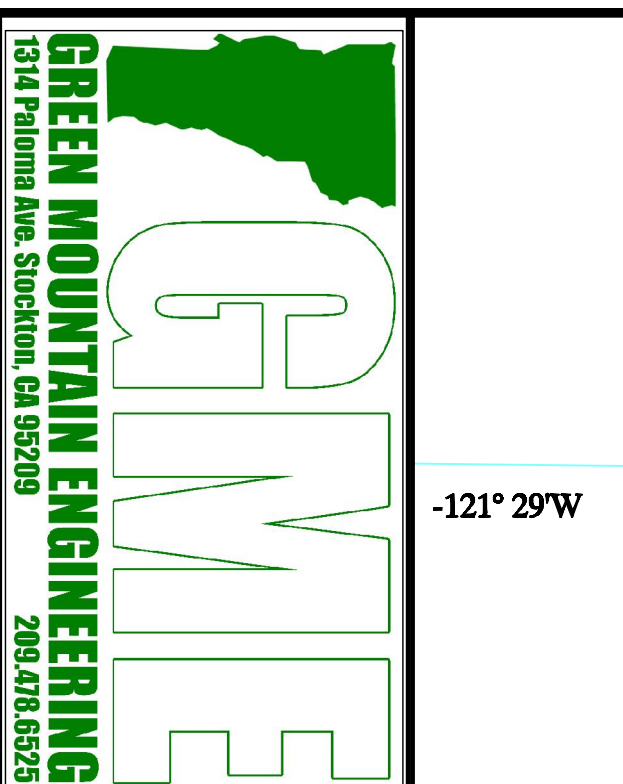
RECLAMATION DISTRICT NO. 2038
LOWER JONES TRACT
LEVEE PATROLS WILL BE CONDUCTED BY THE ROAD RESIDENT PATROLMEN WHO WILL REPORT TO THE DISTRICT ENGINEER. PATROLS WILL BE CONDUCTED AT LEAST ONCE PER WEEK. PATROLS WILL BE CONDUCTED AT LEAST ONCE PER WEEK.

EVACUATION PLAN
RECLAMATION DISTRICT NO. 2038
EVACUATIONS WILL BE CONDUCTED BY THE DISTRICT ENGINEER. EVACUATIONS WILL BE CONDUCTED BY THE DISTRICT ENGINEER. EVACUATIONS WILL BE CONDUCTED BY THE DISTRICT ENGINEER.

FLOOD WATER DRAINAGE PLAN
RECLAMATION DISTRICT NO. 2038
FLOOD WATER DRAINAGE PLAN FOR RECLAMATION DISTRICT NO. 2038. FLOOD WATER DRAINAGE PLAN FOR RECLAMATION DISTRICT NO. 2038.

LEVY CROWN ELEVATION INFORMATION
RECLAMATION DISTRICT NO. 2038
LEVY CROWN ELEVATION INFORMATION FOR RECLAMATION DISTRICT NO. 2038. LEVY CROWN ELEVATION INFORMATION FOR RECLAMATION DISTRICT NO. 2038.

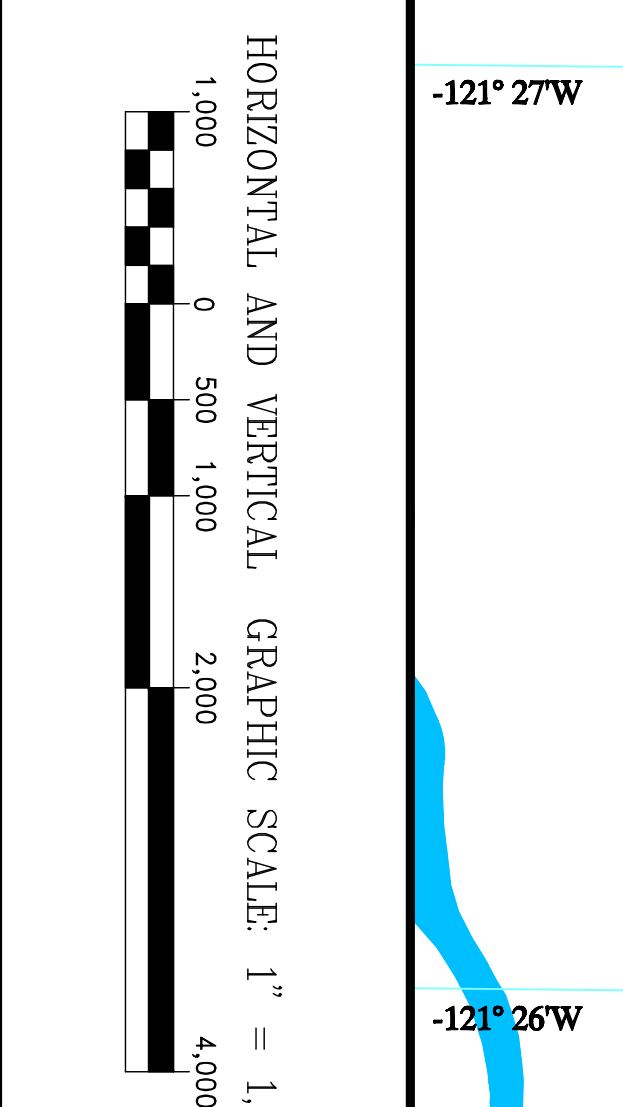
TACTICAL PLANS - (PRELIMINARY ENGINEERING DESIGNS)
RECLAMATION DISTRICT NO. 2038
TACTICAL PLANS - (PRELIMINARY ENGINEERING DESIGNS) FOR RECLAMATION DISTRICT NO. 2038. TACTICAL PLANS - (PRELIMINARY ENGINEERING DESIGNS) FOR RECLAMATION DISTRICT NO. 2038.



LOWER JONES TRACT - RECLAMATION DISTRICT NO. 2038
ANNEX A - FLOOD CONTINGENCY MAP
SAN JOAQUIN COUNTY

REVISIONS

REV.	DATE	DESCRIPTION
1	2018-03	ISSUED FOR PERMITTING
2	2018-04	REVISED FOR COMMENTS
3	2018-05	REVISED FOR COMMENTS
4	2018-06	REVISED FOR COMMENTS
5	2018-07	REVISED FOR COMMENTS
6	2018-08	REVISED FOR COMMENTS
7	2018-09	REVISED FOR COMMENTS
8	2018-10	REVISED FOR COMMENTS
9	2018-11	REVISED FOR COMMENTS
10	2018-12	REVISED FOR COMMENTS



PROJECT INFORMATION

PROJECT NO.	2018-30
DESIGN BR.	SLB
CHECK BR.	AS SHOWN
DATE	2018-02
DCI FILE	LOWERJONESTRACT.DWG
SHEET NO.	1
TOTAL SHEETS	1